



**Leading the Fight Against Fire**

One point of contact. Everything you need.

# PRODUCT CATALOGUE





BFI Fire makes every effort to maintain the accuracy and quality of the information provided in this catalogue. However, BFI Fire cannot guarantee and assumes no responsibility for the accuracy or completeness of the information provided. The copyright of all content on this catalogue is owned by BFI Fire and/or the various manufacturers of our equipment. No part of the catalogue may be changed, reproduced, stored in or transmitted on any website or medium without the prior written permission of BFI Fire. In case of any questions or comments, feel free to contact us.

# CONTENTS

## 4 THE BFI FIRE DIFFERENCE

## 7 PORTABLE EXTINGUISHERS

- 8 ABE Dry Chemical Range
- 10 HP Dry Chemical Range
- 11 CO<sub>2</sub> Extinguisher Range
- 12 9.0L Water Extinguisher
- 13 9.0L AFFF Foam Extinguisher
- 14 Foamline Extinguishers
- 15 Wet Chemical Extinguishers
- 16 9.1L Berkicold Foam Extinguisher

## 17 MOBILE EXTINGUISHERS

- 18 ABE Powder Extinguishers
- 19 AFFF Foam Extinguishers
- 20 CO<sub>2</sub> Mobile Fire Extinguishers
- 21 Mobile Foam Extinguisher

## 23 VEHICLE BRACKETS

- 24 Galvanised Vehicle Brackets
- 25 Over Centre Vehicle Brackets
- 26 Heavy Duty Powder Coated
- 26 Heavy Duty Slim Back Plate

## 27 CABINETS

- 28 Metal Extinguisher Cabinets
- 29 Fibre Glass/Hard Plastic Cabinets
- 30 Lay Flat Hose Cabinets
- 31 Document Cabinets
- 32 Hose Reel Cabinets and Accessories
- 33 CKD Key & Push Lock Cabinets
- 34 Foam Station Cabinet/Cabinet Spares

## 35 HOSE REELS, NOZZLES, SPARES AND ACCESSORIES

- 36 36m AS Fixed Hose Reels
- 37 Swing Arm AS Hose Reel
- 38 Slim Line Cavity AS Hose Reel
- 39 2019 AS Slim Line Hose Reel
- 40 BFI Standard Hose Reels
- 41 Door Mount Hose Reels
- 42 EZI-FIT AS Hose Reel
- 43 Non-Standard Wash Down Hose Reels
- 44 Foam Hose Reel
- 45 Foam Stations
- 46 Hose Reel Nozzles
- 47 Hose Reel Spares
- 48 Hose Reel Stands & Assorted Spares

## 49 SERVICING CONSUMABLES

- 50 Dry Chemical Powder
- 51 AFFF Foam

- 52 Wet Chemical Agent
- 53 Berkicold Biodegradable Foam
- 54 High Expansion Foam
- 55 Fluoroprotein Foam
- 56 "A" Class Foam
- 57 Training Foam
- 58 StrykerGreen Foam

## 59 HYDRANTS, BOOSTERS, CAPS AND SPANNERS

- 60 Horizontal Back Entry Booster Valve
- 61 Vertical Bottom Entry Booster Valve
- 62 Hydrant Valves
- 64 Spares - Hydrant & Booster
- 66 NSW and BI Adaptors
- 67 QRT, SART Adaptors and STORZ Caps
- 68 STORZ Adaptors
- 69 Ball Float Valve, Adaptors & Test Points

## 70 HOSES, MONITORS, NOZZLES AND ADAPTORS

- 71 Lay-Flat Hoses
- 72 Lay-Flat Hose Accessories & Couplings
- 73 Hose Couplings
- 74 Hose Tail Fittings, Adaptors & Breech Piece
- 75 Nozzles
- 76 Branch Pipes
- 77 Foam Inductors & Branch Pipes

## 78 SIGNS AND LABELS

- 79 Extinguisher Identification Signs
- 80 Hose Reel Identification Signs
- 81 Fire Related Location Signs
- 82 Extinguisher Stickers & Labels
- 83 Pressure Test & Misc. Stickers

## 84 VEHICLE SUPPRESSION SYSTEMS

- 85 BFI Fire Vehicle Suppression Range
- 86 Dafo Australia Suppression Systems
- 87 StrykerGreen Suppression System

## 88 GASEOUS SUPPRESSION SYSTEM

- 89 STREAMEX-FK-51-12

## 90 MISCELLANEOUS

- 91 Fire Blankets
- 92 Burn First Aid
- 93 Fire Alarms, Air Horn & Welding Blanket

# BFI FIRE DIFFERENCE

## THE BFI FIRE DIFFERENCE

### “WE DON’T SELL. WE SOLVE.”

We’re more than a supplier. We don’t just sell products. We solve problems.

That’s why we start with the issue you want to overcome - not the product we want to sell you.

- We treat customers as people, not just orders.
- Genuine solutions to problems by understanding your business.
- Talk to whoever you need to talk to. Even the General Manager.
- Same day dispatch.
- Extensive stock list - no waiting for goods to come in before dispatch.
- Quality is important to us, we maintain Global Marks Quality Management ISO9001 stamp of approval.



# ABOUT BFI FIRE

## ABOUT US

BFI Fire has become a leader in fire protection and suppression systems in Australia, New Zealand, Papua New Guinea, Fiji and Southeast Asia.

Our core team have been together for over ten years offering innovative solutions to our customer's problems.

BFI Fire Pty Ltd are focused on expanding our global footprint and continued growth in the Australasian markets, but we still supply the same quality products that our customer's have been getting for over 20 years.

BFI Fire is proudly affiliated with Steel Recon Industries (SRI), the biggest manufacturer and provider of fire fighting solutions in Malaysia.

# OUR CUSTOMERS & PARTNERS

## OUR CUSTOMERS

As a manufacturer and wholesale business, we are proud to design, manufacture and supply quality fire prevention and protection products to our customers across Australia and the Pacific.

## OUR PARTNERS

At BFI, our customers are our partners, but we also work with some of the worlds leading companies to bring you the best innovations and quality products we can produce or find.

This BFI network makes us agile, diverse and strong!

# PORTABLE EXTINGUISHERS

BFI Fire manufacture and stock a broad range of high quality Australian Standard certified portable fire extinguishers. We have large stock holdings and can usually ship to you the next day.



[www.bfire.com.au](http://www.bfire.com.au)

# DRY CHEMICAL POWDER FIRE EXTINGUISHER RANGE

## ABE DRY CHEMICAL POWDER FIRE EXTINGUISHER RANGE

- High fire rating
- Mild steel
- UV resistant powder coating
- Suitable for A,B and E class fires
- Certified to AS 1841.5

Our BFI ABE DCP fire extinguisher range is one of the most asked for and reliable range of fire extinguishers in the Australian market. Certified by SAI Global to Australian Standard 1841.5, this extinguisher is suitable for class A, B and E rated fires.

Powerful. Serviceable. Easy to use. Our ABE DCP range is highly effective in domestic, commercial and industrial settings.



Australian  
Standard  
AS 1841.5  
LIC SMK2048



**BFO6ABE**

### 0.6KG ABE DRY CHEMICAL POWDER FIRE EXTINGUISHER

Agent Type	ABE Powder
Capacity	0.6kg
Rating	1A:5B:E
Test Pressure	2.5MPa (25 bar)
Operating Temp.	-20°C to + 60°C
Operating Pressure	1000kPa
Min. Discharge Time	12 seconds
Material	Steel & Brass
Approvals	AS/NZS 1841.5
Dimensions & weight	T1.5mm D65mm H 300mm & W1.2kg



**BF10ABE**

### 1.0KG ABE DRY CHEMICAL POWDER FIRE EXTINGUISHER

Agent Type	ABE Powder
Capacity	1.0kg
Rating	1A:20B:E
Test Pressure	2.5MPa (25 bar)
Operating Temp.	-20°C to +60°C
Operating Pressure	1000kPa
Min. Discharge Time	12 seconds
Material	Steel & Brass
Approvals	AS/NZS 1841.5
Dimensions & Weight	T1.0mm D84.5mm H335mm W1.8kg



**BF15ABE**

### 1.5KG ABE DRY CHEMICAL POWDER FIRE EXTINGUISHER

Agent Type	ABE Powder
Capacity	1.5kg
Rating	2A:20B:E
Test Pressure	2.5MPa (25 bar)
Operating Temp.	-20°C to +60°C
Operating Pressure	1200kPa
Min. Discharge Time	9 seconds
Material	Steel & Brass
Approvals	AS/NZS 1841.5
Dimensions & Weight	T1.5mm x D89mm H360mm & W2.5kg



# DRY CHEMICAL POWDER FIRE EXTINGUISHER RANGE



**2.5KG ABE DRY  
CHEMICAL POWDER  
FIRE EXTINGUISHER**

**BF25ABE**

Agent Type	ABE Powder
Capacity	2.5kg
Rating	3A:40B:E
Test Pressure	2.5MPa (25 bar)
Operating Temp.	-20°C to +60°C
Operating Pressure	1000kPa
Min. Discharge Time	13 seconds
Material	Steel & Brass
Approvals	AS/NZS 1841.5
Dimensions & Weight	T1.5mm x D118.15mm H420mm & W4.7kg



**4.5KG SLIM ABE DRY  
CHEMICAL POWDER  
FIRE EXTINGUISHER**

**BF45SLIM**

Agent Type	ABE Powder
Capacity	4.5kg
Rating	4A:60B:E
Test Pressure	2.5MPa (25 bar)
Operating Temp.	-20°C to +60°C
Operating Pressure	1400kPa
Min. Discharge Time	19 seconds
Material	Steel & Brass
Approvals	AS/NZS 1841.5
Dimensions & Weight	T1.5mm x D139.0mm H470mm & W7.6kg



**4.5KG ABE DRY  
CHEMICAL POWDER  
FIRE EXTINGUISHER**

**BF45ABE**

Agent Type	ABE Powder
Capacity	4.5kg
Rating	4A:60B:E
Test Pressure	2.5MPa (25 bar)
Operating Temp.	-20°C to +60°C
Operating Pressure	1400kPa
Min. Discharge Time	19 seconds
Material	Steel & Brass
Approvals	AS/NZS 1841.5
Dimensions & Weight	T1.5mm x D157.0mm & H470mm W7.6kg



**9.0KG ABE DRY  
CHEMICAL POWDER  
FIRE EXTINGUISHER**

**BF90ABE**

Agent Type	ABE Powder
Capacity	9.0kg
Rating	6A:80B:E
Test Pressure	2.5MPa (25 bar)
Operating Temp.	-20°C to +60°C
Operating Pressure	1400kPa
Min. Discharge Time	20 seconds
Material	Steel & Brass
Approvals	AS/NZS 1841.5
Dimensions & Weight	T1.6mm x D176.0mm H550mm & W12.8kg

# HP DRY CHEMICAL POWDER FIRE EXTINGUISHER RANGE

## BFI-HP DRY CHEMICAL POWDER FIRE EXTINGUISHERS

- 80B Rated
- Certified to AS 1841.5
- Mines compliant
- ActivFire registered

The HP ABE DCP extinguisher range is certified to Australian Standard 1841.5.

This range is designed for all mining and heavy industry applications and is mine compliant with ActivFire registration. So if it's high performance for underground or heavy industry jobs that you need, ask for the BFI-HP range.



	HP45ABE	HP90ABE
Agent Type	ABE Powder	ABE Powder
Rating	4A:80B:E	6A:80B:E
Capacity	4.5kg	9.0kg
Test Pressure	2.5MPa (25 bar)	2.5MPa (25 bar)
Operating Pressure	1400kPa	1400kPa
Operating Temperature	-20°C to + 60°C	-20°C to + 60°C
Min. Discharge Time	19 seconds	20 seconds
Material	Steel & Brass	Steel & Brass
Approvals	AS/NZS 1841.5	AS/NZS 1841.5
Dimensions	157mm x 157.0mm	166mm x 176.0mm
Weight	7.6kg	12.8kg
Vehicle / Wall Bracket	Yes	Yes



Australian  
Standard  
AS 1841.5  
LIC SMK2048

# CARBON DIOXIDE

## CO<sub>2</sub> FIRE EXTINGUISHER RANGE

### CARBON DIOXIDE CO<sub>2</sub> FIRE EXTINGUISHERS

- Certified to AS 1841.6
- Luxfur aluminium cylinder
- Assembled & tested locally by BFI staff

Used on class B (flammable liquid) fires, CO<sub>2</sub> is safe to use on live electrical fires. Our CO<sub>2</sub> extinguishers are constructed using high-quality Luxfur cylinders and are assembled and tested locally in our Newcastle warehouse. The BFI CO<sub>2</sub> range is certified to Australian Standard AS/NZS 1841.6



	FP20CO2A	FP35CO2A	FP50CO2A
Agent Type	CO <sub>2</sub>	CO <sub>2</sub>	CO <sub>2</sub>
Rating	2:BE	5:BE	5:BE
Capacity	2.0kg	3.5kg	5.0kg
Test Pressure*	220 bar	220 bar	220 bar
Operating Pressure (at 23°)	1350kPa	1350kPa	1350kPa
Operating Temperature	-20°C to +60°C	-20°C to +60°C	-20°C to +60°C
Min. Discharge Time	14 seconds	11 seconds	15 seconds
Material	Aluminium & Brass	Aluminium & Brass	Aluminium & Brass
Approvals	AS/NZ 1841.6	AS/NZ 1841.6	AS/NZ1841.6
Dimensions	540mm x 111mm	585mm x 140mm	675mm x 152mm
Weight	5.7kg	9.7kg	12.7kg
Vehicle / Wall Bracket	Yes	Yes	Yes

\*Test pressure for cylinder, valve and discharge hose



Australian  
Standard  
AS 1841.6  
LIC SMK2048

# BFI WATER FIRE EXTINGUISHER

## 9.0L WATER FIRE EXTINGUISHER

- 304 stainless steel cylinder
- UV resistant powder coating
- Suitable for Class A fires
- Certified to AS 1841.2

Water is the most commonly used extinguisher for class A fires which involve carbonous materials such as wood, paper and textiles. Water extinguishers extinguish the fire by cooling and removing the heat needed to sustain them.



### BF90AW

Agent Type	Air & Water
Capacity	9.0L
Rating	2A
Test pressure*	2.5MPa (25 bar)
Operating pressure at 25°	700 kPa
Min. Discharge time	90 seconds
Material	304 stainless steel & brass
Approvals	AS/NZS 1841.2
Dimensions - Height	635mm
Dimensions - Diameter	180mm
Dimensions - Thickness	1.2mm
Weight	13.5kg
Vehicle / Wall Bracket	YES

\*Test pressure for cylinder, valve and discharge hose



Australian  
Standard  
AS 1841.2  
LIC SMK02085

# BFI AFFF FOAM FIRE EXTINGUISHER

## 9.0L AFFF FOAM FIRE EXTINGUISHER

- 304 stainless steel cylinder
- UV resistant powder coating
- Suitable for Class A and B fires
- Certified to AS 1841.4

Foam fire extinguishers with an AFFF additive, have the effect of improving a water-based extinguisher, by enabling it to be used to fight both A and B class fires.

AFFF foam additives are film-forming, they create a layer to prevent the separation of fuel vapours which prevent fire reignition.



	BF90AF
Agent Type	AFFF Foam
Capacity	9.0L
Rating	3A:20B
Test Pressure*	2.5MPa (25 bar)
Operating Pressure at 25°	1000 kPa
Min. Discharge Time	43 seconds
Material	304 Stainless Steel & Brass
Approvals	AS/NZS 1841.4
Dimensions - Height	635mm
Dimensions - Diameter	180mm
Dimensions - Thickness	1.2mm
Weight	13.5kg
Vehicle / Wall Bracket	YES

\*Test pressure for cylinder, valve and discharge hose



Australian  
Standard

AS 1841.4  
LIC SMK02085

# FOAMLINE

## FIRE EXTINGUISHER

### FOAMLINE FIRE EXTINGUISHERS

- 304 stainless steel cylinder
- UV resistant powder coating
- Offered in a full range of sizes
- Certified to AS 1841.4
- Rated for F class

BFI Foamline extinguishers are offered to both the Australian and New Zealand market.

BFI offers more than most in this range, with multiple sizes available. We manufacture and supply beyond the typical 9-litre size offered by most fire companies. This along with being rated for class F fires makes them a viable extinguisher option for use in more situations.



Not recommended for use on electrical fires

	FL16AF	FL25AF	FL45AF	FL60AF	FL90AF
Agent Type	AFFF Foam	AFFF Foam	AFFF Foam	AFFF Foam	AFFF Foam
Rating	1A:1F	2A:2F	2A:5B:2F	3A:10B3F	4A:10B:3F
Capacity	1.6L	2.5L	4.5L	6.0L	9.0L
Test Pressure*	2.5MPa (25 bar)	2.5MPa (25 bar)	2.5MPa (25 bar)	2.5MPa (25 bar)	2.5MPa (25 bar)
Operating Pressure	5 bar	6 bar	10 bar	10 bar	10 bar
Operating Temperature	+1°C to +60°C	+1°C to +60°C	+1°C to +60°C	+1°C to +60°C	+1°C to +60°C
Min. Discharge Time	12.8 to 15.7 sec	12.7 to 22.9 sec	19 to 23.2 sec	26.3 to 32.2 sec	44.7 to 54.6 sec
Material	Stainless Steel & Brass	Stainless Steel & Brass	Stainless Steel & Brass	Stainless Steel & Brass	Stainless Steel & Brass
Approvals	AS/NZ 1841.4	AS/NZ 1841.4	AS/NZ 1841.4	AS/NZ 1841.4	AS/NZ1841.4
Dimensions - Thickness	1.0mm	1.0mm	1.0mm	1.0mm	1.2mm
Dimensions - Diameter	119mm	119mm	160mm	160mm	180mm
Dimensions - Height	370mm	420mm	460mm	540mm	620mm
Weight	3.0kg	4.2kg	6.8kg	8.5kg	12.7kg
Bracket	Yes	Yes	Yes	Yes	Yes

\*Test pressure for cylinder, valve and discharge hose

# WET CHEMICAL FIRE EXTINGUISHER

## WET CHEMICAL FIRE EXTINGUISHERS

- 304 stainless steel cylinder
- UV resistant powder coating
- Rated for F class fires
- Certified to AS 1841.3

Wet chemical extinguishers contain a special potassium acetate based agent for use on fires involving cooking oils or fats. BFI wet chemical extinguishers are manufactured and approved to AS1841.3.

Not recommended for use on electrical fires



	BF25WC	BF70WC
Agent Type	Potassium acetate	Potassium acetate
Capacity	2.5L	7.0 L
Rating	1A:3F	2A:4F
Operating Temperature	+1°C to + 60°C	
Test Pressure*	2.5MPa (25 bar)	
Operating Pressure at 23°	700kPa (7 bar)	
Min. Discharge Time	40 seconds	67 seconds
Material	Stainless Steel	Stainless Steel
Approvals	AS1841.3	AS1841.3
Dimensions - Height	420mm	635mm
Dimensions - Diameter	118.5mm	118mm
Dimensions - Thickness	1.2mm	1.2mm
Weight	4.8kg	11.7kg
Vehicle / Wall Bracket	Yes	Yes

\*Test pressure for cylinder, valve and discharge hose



Australian  
Standard

AS 1841.3  
LIC SMKO2085

# BFI BERKICOLD FOAM FIRE EXTINGUISHER

## 9.1L BERKICOLD FOAM FIRE EXTINGUISHER

- Biodegradable
- Free from PFOS & PFOA
- Non-corrosive & alcohol resistant
- 304 stainless steel cylinder
- UV resistant powder coating
- Suitable for both A and B class fires

BFI high-performance foam extinguisher is filled with Berkicold - our Fluorine, PFOS and PFOA free foam additive. This non-corrosive and alcohol-resistant foam is suitable for both A and B class fires.

Powerful. Serviceable. Easy to use. Our foam extinguisher is highly effective in domestic, commercial and industrial settings.



	BF91AFG
Agent Type	Berkicold Foam
Capacity	9.1 L
Rating	3A:20B
Test Pressure*	2.5MPa (25 bar)
Operating Pressure at 23°	1000kPa
Operating Temperature	+1°C + 60°C
Min. Discharge Time	43 seconds
Material	304 Stainless Steel & Brass
Approvals	AS/NZS 1841.4
Dimensions - Height	635.0mm
Dimensions - Diameter	180.0mm
Weight	13.5kg
Vehicle / Wall Bracket	YES

\*Test pressure for cylinder, valve and discharge hose



Australian  
Standard

AS 1841.4  
LIC SMK2048



# MOBILE EXTINGUISHERS

The BFI mobile extinguisher range is deployed in high-risk areas where there is a lack of additional fire fighting cover. They are designed to be easily operated by just one person - making them ideal for remote locations.



[www.bfifire.com.au](http://www.bfifire.com.au)

# ABE POWDER

## MOBILE FIRE EXTINGUISHERS



### ABE POWDER

#### MOBILE FIRE EXTINGUISHERS

- Marine equipment directive approved
- Pressure equipment directive approved
- Stored pressure or cartridge types
- Mild steel

The ABE powder range of mobile fire extinguishers is available in both stored pressure and cartridge pressure types.

Suitable for use on Class A,B and C fires.

PRESSURE EQUIPMENT DIRECTIVE  
APPROVED FIRE EXTINGUISHERS



0029

MARINE EQUIPMENT DIRECTIVE  
APPROVED FIRE EXTINGUISHERS



0029

	FEX220-MS-250-EN	FEX221-MS-500-EN	FEX225-MS-250-EN	FEX225-MS-500-EN
Type	Stored Pressure	Stored Pressure	Cartridge	Cartridge
Agent Type	ABE Powder	ABE Powder	ABE Powder	ABE Powder
Propellant	Nitrogen	Nitrogen	0.28kg Nitrogen Cartridge	0.28kg Nitrogen Cartridge
Rating	A II B C	A II B C	A II B C	A II B C
Capacity	25kg	50kg	25kg	50kg
Dimensions (W x L x H)	460mm x 550mm x 940mm	560mm x 700mm x 1020mm	3460mm x 550mm x 940mm	560mm x 750mm x 1026mm
Test Pressure	25 bar	25 bar	25 bar	25 bar
Operating Pressure	14 bar	14 bar	14 bar	14 bar
Discharge Time	18 - 25 seconds	33 to 40 seconds	16 to 24 seconds	43 to 57 seconds
Material	Steel & Brass	Steel & Brass	Steel & Brass	Steel & Brass
Approx. Full Weight	55kg	95kg	60kg	106kg
Approvals	Marine Equipment 0029	Marine Equipment 0029	Marine Equipment 0029	Marine Equipment 0029
Approx. Throw Range	10m	10m	10m	10m

# AFFF FOAM

## MOBILE FIRE EXTINGUISHERS

### AFFF FOAM

#### MOBILE FIRE EXTINGUISHERS

- Marine equipment directive approved
- Pressure equipment directive approved
- Stored pressure or cartridge types
- Constructed in 306 stainless steel

BFI's foam type mobile fire extinguishers are manufactured using stainless steel cylinders.

Other size mobile extinguisher units can be made available on request.



	FEX303-SS-450-EN	FEX304-SS-135-EN	FEX305-SS-500-EN	FEX306-SS-135-EN
Type	Stored Pressure	Stored Pressure	Cartridge	Cartridge
Agent Type	AFFF	AFFF	AFFF	AFFF
Propellant	Nitrogen	Nitrogen	0.6KG CO <sub>2</sub> Cartridge	0.6KG CO <sub>2</sub> Cartridge
Rating	A IV B	A IV B	A IV B	A IV B
Capacity	45L	135L	45L	135L
Dimensions (Wx Lx H)	500mm x 700mm x 1020mm	650mm x 830mm x 1570mm	560mm x 700mm x 1020mm	650mm x 900mm x 1570mm
Test Pressure	25 bar	25 bar	25 bar	25 bar
Operating Pressure	14 bar	14 bar	-	-
Discharge Time	165 to 185 seconds	16 to 17 minutes	180 to 200 seconds	14 to 15 minutes
Material	Stainless Steel & Brass	Stainless Steel & Brass	Stainless Steel & Brass	Stainless Steel & Brass
Approx. Full Weight	90kg	205kg	90kg	210kg
Approvals	Marine Equipment 0029	Marine Equipment 0029	Marine Equipment 0029	Marine Equipment 0029
Approx. Throw Range	12m	12m	12m	12m

# CO<sub>2</sub>

## MOBILE FIRE EXTINGUISHERS

### CO<sub>2</sub> MOBILE FIRE EXTINGUISHER

- Made of seamless manganese Steel

These mobile fire extinguishers are suitable for use on B and E class fires.



	FEX079A	FEX079B
Type	Carbon Dioxide	Carbon Dioxide
Agent Type	CO <sub>2</sub>	CO <sub>2</sub>
Rating	A II B C	A II B C
Capacity	45kg	32kg
Dimensions (H x W x D)	1600mm x 2000mm x 1170mm	1550mm x 610mm x 1150mm
Test Pressure	250 bar	250 bar
Operating Pressure	60 bar	60 bar
Discharge Hose (D x L)	1/2" 0m x 6m	1/2" 0m x 6m
Discharge Time	75 seconds	60 seconds
Material	Steel & Brass	Steel & Brass
Approx. Full Weight	150kg	112kg
Approvals	Manganese steel BS 5045 Part 1	
Paint Finish	Grey or Red	Grey or Red

# MOBILE FOAM

## MOBILE FIRE EXTINGUISHER TROLLEY

### MOBILE FOAM EXTINGUISHER

#### MOBILE FOAM FIRE EXTINGUISHER ON TROLLEY

- 2 x 15m fire hose - complete with BS coupling
- 225 LPM foam inductor with pickup tube
- 225 LPM low expansion branchpipe
- Control valve (2" ball valve)
- 120L foam concentrate capacity and fibre glass tank trolley

The foam liquid extinguisher on the trolley is highly manoeuvrable and is suitable for fires that can't be dealt with by using portable foam extinguishers. Effective on flammable liquid fires, this is a self-contained foam production unit that requires connection to a water supply (minimum water supply required is 180 LPM at 5 bar).

Suitable for oil storage installation loading stations, paint and solvent stores.



Performance Data for FEX161

Type	Foam production unit				
Agent Type	Water and Foam				
Input pressure at indicator	Total water flow (Litres per min.)	Foam produced (Litres per min.)	Approx, run time mins. inductor setting		Foam throw from branchpipe (meters)
			3%	6%	
5 bar	180	1800	22	11	14
6 bar	197	1970	20	10	-
7 bar	213	2130	18	9	17
8 bar	228	2280	17	8.5	-
10 bar	255	2550	16	16	20



# VEHICLE BRACKETS

Designed and manufactured to the same high standard as all of our BFI products, our vehicle brackets come in a range of sizes and materials that will fit most brands of extinguishers.



[www.bfire.com.au](http://www.bfire.com.au)

# VEHICLE BRACKETS

## GALVANISED FOR FIRE EXTINGUISHERS

### HEAVY DUTY GALVANISED VEHICLE BRACKETS

Designed and manufactured in heavy duty galvanised steel, these brackets are made to last.



Code	Description
VBZP1.0	BFI vehicle bracket suitable for 1 kg BFI extinguishers
VBZP1.5	BFI vehicle bracket suitable for 1.5kg BFI extinguishers
VBZP2.5	BFI vehicle bracket suitable for 2.5kg BFI extinguishers
HDVB4.5	BFI heavy duty vehicle bracket suitable for 4.5kg BFI extinguishers
HDVB4.5SLIM	BFI heavy duty vehicle bracket suitable for 4.5kg SLIM BFI extinguishers
HDVB9.0	BFI heavy duty vehicle bracket suitable for 9.0kg BFI extinguishers
HDVB9L	BFI heavy duty vehicle bracket suitable for 9.0L BFI extinguishers
HDVBWDE	Double ear web heavy duty bracket, suitable for 9.0kg BFI extinguishers
HDVBWDEB	Belt & latch assy to suit HDVBWDE

### FIBREGLASS VEHICLE BRACKETS

Code	Colour	Description
FEXFSTAND	Red	Light weight fibreglass bracket





# VEHICLE BRACKETS

## FOR FIRE EXTINGUISHERS

### OVER CENTRE - HEAVY DUTY VEHICLE BRACKETS

Designed and manufactured to last, this nickel plated bracket has been made in an adjustable format. Our customers love this bracket.



Code	Description
WVBOC45	Over centre vehicle bracket suitable for 4.5kg BFI extinguishers
WVBOC90	Over centre vehicle bracket suitable for 9.0kg BFI extinguishers
WVBOCA	Fully adjustable over centre vehicle bracket suitable for 4.5kg and 9.0kg BFI extinguishers

### POWDER COATED VEHICLE BRACKETS

Designed and manufactured in an adjustable format.



Code	Colour	Description
KX09-016-21	Red	Heavy duty bracket - suitable for use with 2-3kg extinguishers
KX09-016-20	Black	Heavy duty bracket - suitable for use with 4.5kg extinguishers
KX09-016-18	Black	Heavy duty bracket - suitable for use with 9kg & 9L extinguishers

# VEHICLE BRACKETS

## FOR FIRE EXTINGUISHERS

### HEAVY DUTY POWDER COATED VEHICLE BRACKETS

Designed and manufactured to last, this powder coated steel bracket is finished in black, making it one of the more aesthetically pleasing brackets on the market.



Code	Description
HXVB4.5	Heavy duty black powder coated vehicle bracket for 4.5kg extinguishers
HXVB90	Heavy duty black powder coated vehicle bracket for 9.0kg extinguishers

### 'NEW SLIM BACK PLATE' HEAVY DUTY POWDER COATED VEHICLE BRACKETS

Our new slim design, the heavy duty black powder coated vehicle bracket, features a smaller back plate. It can be mounted to a smaller surface area. This is fast becoming a popular choice amongst our customers, as it takes up less space than traditional 9.0kg brackets.



Code	Description
VB10069.0	Heavy duty black powder coated vehicle bracket for 9.0kg extinguishers

# CABINETS

BFI offer a full range of fire cabinets to protect and secure your fire hoses, hose reels and portable extinguishers. Supplied in a range of sizes and materials, you can be sure that we will have something to suit your needs.



[www.bfire.com.au](http://www.bfire.com.au)

# EXTINGUISHER CABINETS

## PORTABLE EXTINGUISHER CABINETS

### METAL EXTINGUISHER CABINETS

NO GLASS , PUSH LOCK & KEY LOCK

- Safety - limits the use of fire equipment to firefighting
- Guaranteed to work
- Guaranteed to fit
- Guaranteed to last
- Easily installed, reduced downtime

BFI offers a large range of metal portable extinguisher cabinets.



Code	Colour	Size	Description	Lock type
FEX169A	Red	4.5kg	No glass extinguisher cabinet	Push lock
FEX169B	Red	9kg	No glass extinguisher cabinet	Push lock
FEX146B	Red	4.5kg	Break glass extinguisher cabinet	Key lock
FEX146C	Red	9kg	Break glass extinguisher cabinet	Key lock
FEX146D	Red	5kg	No glass, for CO <sub>2</sub> extinguisher cabinet	Push lock
FEX169E	Red	-	Single door - double extinguisher cabinet	-
FEX146DK	Red	5kg	Break glass , for CO <sub>2</sub> extinguisher cabinet	Key lock
FEX146E	Red	-	Break glass, single door - double extinguisher cabinet	Key lock

# EXTINGUISHER CABINETS

## PORTABLE EXTINGUISHER CABINETS

### FIBRE GLASS EXTINGUISHER CABINETS

WITH & WITHOUT VIEWING PANEL

- Safety - limits the use of fire equipment to firefighting
- Guaranteed to work
- Guaranteed to fit
- Guaranteed to last
- Easily installed, reduced downtime

Our fibre glass panels are heavy duty and are available with and without a viewing panel.



Code	Colour	Size	Description	Lock Type
FEXFG9	Red	9kg	Fibre glass extinguisher cabinet	Side latches
FEXFGW9	Red	9kg	Fibre glass extinguisher cabinet, with viewing panel	Side latches

### HARD PLASTIC EXTINGUISHER CABINETS

HARD PLASTIC OUTDOOR

- Safety - limits the use of fire equipment to firefighting
- Guaranteed to work
- Guaranteed to fit
- Guaranteed to last
- Easily installed, reduced downtime

Our range of hard plastic portable extinguishers are a popular option for workbenches like commercial kitchens and workshops.



Code	Colour	Size	Description	Lock type
TH02-01	Red & black	9kg	Hard plastic outdoor extinguisher cabinet	Latch
TH02-02	Red & black	4.5kg	Hard plastic outdoor extinguisher cabinet	Latch
TH02-04	Red & black	Double	Hard plastic double extinguisher outdoor cabinet	Latch

# HOSE CABINETS

## LAYFLAT HOSE CABINETS



**MODEL A**  
HOSE CABINET

WRS087-MS-MA-RD

Description	Model A hose cabinet
Dimensions H x W x D	800mm x 100mm x 300mm
Material	Mild steel
Thickness	1.2mm
Installation	Wall mounted
Paint Finish	Epoxy red
Capacity	1 landing valve 1 hose cradle 1 2-1/2"x30m hose



**MODEL B**  
HOSE CABINET

WRS087-MS-MB-RD

Description	Model B hose cabinet
Dimensions H x W x D	900mm x 100mm x 300mm
Material	Mild steel
Thickness	1.2mm
Installation	Wall mounted
Paint Finish	Epoxy red
Capacity	1-1/2" or 2-1/2" hose rack assembly



**MODEL C**  
HOSE CABINET

HYD071-MS-MC-RD

Description	Model C hose cabinet
Dimensions H x W x D	560mm x 1163mm x 300mm
Material	Mild steel
Thickness	0.2mm
Installation	Floor mounted
Paint Finish	Epoxy red
Capacity	2 diffuser nozzles 2 length of hose 2 1/2" x 30m



**MODEL D**  
HOSE CABINET

HYD071-MS-MD-RD

Description	Model D hose cabinet
Dimensions H x W x D	590mm x 610mm x 340mm
Material	Mild steel
Thickness	0.92mm
Installation	Wall mounted
Paint Finish	Epoxy red
Capacity	2 diffuser nozzles 2 lengths of hose 2 1/2" x 30m hose

# HOSE & DOCUMENT

## LAYFLAT HOSE & DOCUMENT CABINETS



### MODEL E HOSE CABINET

HYDO85-MS-ME-RD

Description	Model E hose cabinet
Dimensions H x W x D	900mm x 750mm x 500mm
Material	Mild steel
Thickness	1.5mm
Installation	Floor mounted
Paint Finish	Epoxy red
Capacity	2 9kg fire extinguishers 2 2-1/2" x 30m canvas hose 2 diffuser nozzles 1 diffuser breeching

### DOCUMENT CABINETS EMERGENCY DOCUMENT BOX

DBMIBL

Description	Metal document box - emergency info.
Dimensions H x W x D	385mm x 310mm 150mm
Material	Metal



# HOSE REEL CABINETS

## HOSE REEL CABINETS & ACCESSORIES



**BOX FOR HOSE REEL & BALL VALVE CABINETS**

HRS071-MS-BUL-RD

<b>Description</b>	Box for hose reel & ball valve 003 lock
<b>Capacity</b>	Ball Valve & 1 Nozzle
<b>Thickness</b>	0.9mm
<b>Dimensions (HxWxD)</b>	210mm x 210mm x 140mm
<b>Material</b>	Mild Steel
<b>Finish</b>	Red epoxy powder coating
<b>Locking</b>	003 key lock



**BOX FOR HOSE REEL NOZZLE CABINETS**

HRS048-MS-STD

<b>Description</b>	Box for hose reel nozzle 003 lock
<b>Capacity</b>	1 Nozzle
<b>Thickness</b>	0.9mm
<b>Dimensions (HxWxD)</b>	130mm x 130mm x 55mm
<b>Material</b>	Mild Steel
<b>Finish</b>	Red epoxy powder coating
<b>Locking</b>	003 key lock



**VINYL HOSE REEL COVER**  
AUSTRALIAN MADE

BFI's hose reel covers are made to last, manufactured here in Australia from UV stabilised vinyl.

CTRHRHD

<b>Description</b>	Vinyl hose reel - heavy duty cover
--------------------	------------------------------------



**POLY NYLON HOSE REEL COVER**

This hose reel cover is our light duty option. It is made from poly nylon.

CTRHRP

<b>Description</b>	Hose reel cover - light duty option
--------------------	-------------------------------------



# HOSE REEL CABINETS

## HOSE REEL CABINETS & ACCESSORIES

### ARCHITRAVE CABINET

#### HOSE REEL CABINET

BFI's architrave cabinet is a popular choice with architects, as it is designed to be recessed into the wall. Taking up less space, this sleek model is the best option for modern design spaces.

We hold good stock in mild steel - this can usually be shipped the next day. This model is also available to order in stainless steel.

#### HR5009-MS-MH-RD

Description	Model H hose reel cabinet
Capacity	1 unit swing hose reel
Thickness	1.2mm
Overall dimensions (W x H)	740mm x 840mm
Recessed wall - opening dimensions (W x H)	700mm x 800mm
Installation	Recessed
Material	Mild steel
Finish	Red epoxy powder coating - minimum 70 micron.
Locking	003 key lock



\*Stocked in appoxy red. Available in stainless steel by order.

### CKD HOSE REEL HOSE CABINETS

#### KEY AND PUSH LOCK

#### HR5CKDK

#### HR5CKDP

	HR5CKDK	HR5CKDP
Description	CKD Hose Reel Cabinet - Key Lock	CKD Hose Reel Cabinet - Push Lock
Weight	60kg (with hose reel)	60kg (with hose reel)
Installation	Wall mounted	Wall mounted
Material	Mild steel	Mild steel
Finish	Epoxy powder - red	Epoxy powder - red
Locking	003 key lock	Push lock
Dimensions	740mm x 1040mm x 350mm	740mm x 1040mm x 350mm

\*Both options are available in stainless steel.



# CABINETS & SPARES

## FOAM CABINET, SPARES & ACCESSORIES

### FOAM STATION CABINET

#### FOAM STATION

- 2 (2 1/2") 65mm X 30mm fire hose with aluminium alloy coupling
- 140 litre AFFF foam in fibre glass tank
- 2" gate valve
- Low expansion foam branchpipe 225LPM
- Stainless steel pick up tube
- 100mm opening hole for foam concentrate filling
- 225LPM foam, inductor adjustable 3% to 6% foam concentrate.
- Inlet connection - 2" BSP male thread



#### FOS087-MS-STD-RD

Description	Foam station C/W cabinet, IND, hose, nozzle.
Capacity	140L foam with inductor 2-1/2" x 30m hose, foam branchpipe and nozzle
Thickness	1.5mm
Overall dimensions (W x H x D)	1500mm x 1100mm x 500mm
Installation	Floor mounted
Material	Mild steel
Paint Finish	Epoxy powder - red

### CABINET SPARES

#### SPARE KEYS, LOCKS AND BREAK GLASS



Code	Description
003KEY	Key 003 lock EXT & hose reel cabinet
CAB008-MS240-STD-ZP	Lock - vidic model 383 K/L
CAB008-MS240-ZP	Lock - red button A240-3 P/L
HRCKDGD	Replacement break glass to suit K/L cabinet

### CABINET ACCESSORIES

#### FOR HOSE REEL CABINETS

	Description
HRCKDDB	CKD hose reel cabinet back cover
HRCKDSD	CKD hose reel cabinet stand

# HOSE REELS, NOZZLES, SPARES AND ACCESSORIES

BFI Fire manufacture and stock a full range of high quality Australian Standard Certified hose reels and accessories. With large stock holdings these can usually be supplied the next day.



[www.bfifire.com.au](http://www.bfifire.com.au)

# FIXED HOSE REEL

## AUSTRALIAN STANDARD HOSE REEL

### 36M FIXED HOSE REELS

#### AUSTRALIAN STANDARD

- Australian Standard Certification
- Local after sales service and ongoing support
- Easy to install and maintain
- High quality construction
- Available in 304 stainless steel

Certified by SAI Global to AS/NZS 1221 standards, and with years of development behind it, BFI's 19mm x 36m fire hose reel is widely regarded as one of the best and most reliable hose reels available on the Australian market.



	HRSO35A	HRSO35S-S
Hose Length & Diameter	19mm x 36m	19mm x 36m
Test Pressure	2000kPa	2000kPa
Working Pressure	1500kPa	1500kPa
Min. Discharge Rate	0.45L @ 220kPa	0.45L @ 220kPa
Approvals	AS/NZS 1221	AS /NZS 1221
Ball Valve (25mm) with Nozzle Interlock	Brass & Mild Steel	Brass & Stainless Steel
Wall Bracket/Hose Guide	Mild Steel	Stainless Steel
Drum Diameter	483mm	483mm
Installed Hose Reel (Depth off mount surface)	Approx. 310mm	Approx. 310mm

Installation and commissioning in accordance to AS1221-1997



Australian Standard  
AS/NZS 1221  
LIC SMK1355

# SWING ARM

## AUSTRALIAN STANDARD HOSE REEL

### SWING ARM HOSE REEL AUSTRALIAN STANDARD

- Australian Standard Certification
- Swing out mechanism - allowing easy unspooling in multiple directions
- Easy to install and maintain
- High quality construction

Certified by SAI Global to AS/NZS 1221 and with many years of development behind it, BFI's 19mm x 36m swing arm hose reel is widely regarded as one of the best and most reliable hose reels available on the Australian market. Swing arm hose reels are mounted so that they swing out and allow the fire hose to unspool in the direction the user is pulling it, making for a smoother reel operation.



#### HRS037A

Hose Length & Diameter	19mm x 36m
Test Pressure	2000kPa
Working Pressure	1500kPa
Min. Discharge Rate	0.45L @ 220kPa
Approvals	AS/NZS 1221
Ball Valve (25mm) with Nozzle Interlock	Brass
Wall Bracket/Hose Guide	Mild Steel
Drum Diameter	483mm
Installed Hose Reel (Depth off Mount Surface)	Approx. 310mm

Installation and commissioning in accordance to AS1221-1997



Australian  
Standard  
AS/NZS 1221  
LIC SMK1355

# SLIM LINE

## AUSTRALIAN STANDARD HOSE REEL

### SLIM LINE CAVITY HOSE REEL AUSTRALIAN STANDARD

- Australian Standard Certification
- Innovative new slim line design
- Easy to install & maintain
- High quality construction

The slim line hose reel is designed for installation in shopping centres where shop front space is at a premium. Designed to be assembled and fixed in a cavity between the walls of adjacent shops.



#### HRSLIMHT

Approvals	AS 1221
Material for Rack	Mild Steel
Material for Reel	Mild Steel
Installation	Floor Mounting
Suitable for	19m x 36m Hose Reel

Installation and commissioning in accordance to AS1221-1997



Australian  
Standard  
AS 1221  
LIC SMK1355

# NEW SLIM LINE

## AUSTRALIAN STANDARD HOSE REEL

### 2019 SLIM LINE HOSE REEL AUSTRALIAN STANDARD

- Australian Standard Certification
- Innovative new slim line design
- Easy to install & maintain
- High quality construction

Our new 2019 slim line hose reel has the same proven construction, designed for installation in smaller cavities. With minimised depth and 22" plates this new innovative design is a great alternate option in areas where space is at a premium.



	HRSO35B
Hose Length & Diameter	19mm x 36m
Test Pressure	2000kPa
Working Pressure	1500kPa
Min. Discharge Rate	0.45L @ 220kPa
Approvals	AS 1221
Ball Valve (25mm) with Nozzle Interlock	Brass
Wall Bracket/Hose Guide	Mild Steel
Drum Diameter	560mm
Installed Hose Reel (Depth off Mount Surface)	Approx. 215.0mm

Installation and commissioning in accordance to AS1221-1997



Australian  
Standard  
AS 1221  
LIC SMK1355

# BFI RANGE

## STANDARD HOSE REELS

### BFI VARIOUS SIZE STANDARD HOSE REELS

- Built to Australian Standard 1221
- Easy to install & maintain
- High quality construction

Constructed to the same high Australian standard as our 19mm x 36m fixed standard hose reel, BFI manufacture and supply the following fixed hose reel sizes. Our full range of fixed standard hose reels are regarded as some of the best and most reliable hose reels available on the Australian market.



	HRSO35A - 50	HRSO35A - 40	HRSO36A
Hose Length & Diameter	19mm x 50m	19mm x 40m	25mm x 30m
Test Pressure	2000kPa	2000kPa	2000kPa
Working Pressure	1500kPa	1500kPa	1500kPa
Min. Discharge Rate	0.45L @ 220kPa	0.45L @ 220kPa	0.45L @ 220kPa
Ball Valve (25mm) with nozzle interlock	Brass	Brass	Brass
Wall Bracket/Hose Guide	Mild Steel	Mild Steel	Mild Steel
Drum Diameter	560mm	560mm	560mm
Installed Hose Reel (Depth off Mount Surface)	Approx. 215.0mm	Approx. 215.0mm	Approx. 215.0mm



# DOOR MOUNT

## AUSTRALIAN STANDARD HOSE REELS

### DOOR MOUNT STANDARD HOSE REELS

- Australian Standard Certification
- Easy to install & maintain
- High quality construction

Constructed to the same high Australian standard as our 19mm x 36m fixed standard hose reel, BFI manufacture and supply the following fixed hose reel sizes. Our full range of fixed standard hose reels are regarded as some of the best and most reliable hose reels available on the Australian market.



	HRSO72K	HRSO72P	HRSO72PL
Hose Length & Diameter	19mm x 36m	19mm x 36m	19mm x 36m
Lock Type	Key lock	Push lock	Push lock
Door Opening to	Right hand	Right hand	Left hand
Approvals	AS 1221	AS 1221	AS 1221
Paint Finish	Epoxy red	Epoxy red	Epoxy red
Material	Mild Steel	Mild Steel	Mild Steel
Weight	60kg	60kg	60kg
Thickness	1.5mm	1.5mm	1.5mm



# EZI-FIT

## AUSTRALIAN STANDARD HOSE REEL

### EZI-FIT HOSE REEL AUSTRALIAN STANDARD

- Designed for one man installation, replacement and servicing
- Same slim design as other BFI hose reels
- High quality construction as other BFI hose reels
- Swing arm is available on request

Innovative in hose reel technology - the BFI EZI-FIT hose reel is detachable and allows for a quick and easy one man installation, service and hose replacement.

Approved by SAI Global to Australian and New Zealand Standard 1221, this hose reel boasts the same slim fit that architects expect of BFI hose reels.

Swing arm can be ordered on request.

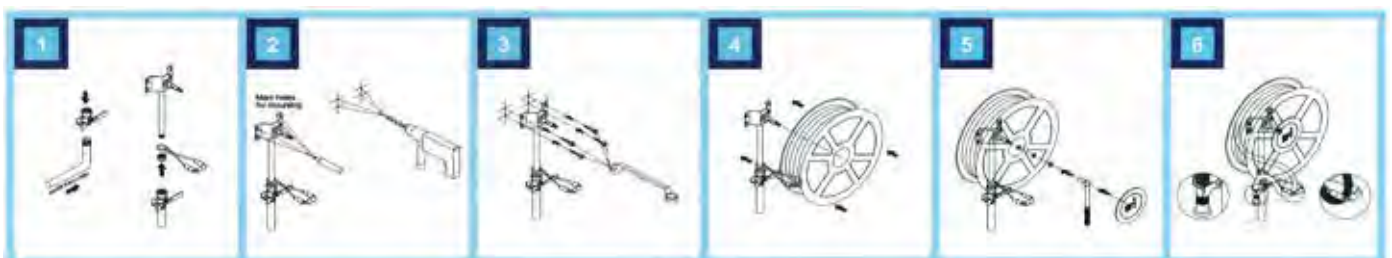


	HRSO35EZ
Hose Length & Diameter	19mm x 36m
Test Pressure	2000kPa
Working Pressure	1500kPa
Min. Discharge Rate	0.45L @ 220kPa
Approvals	AS 1221
Ball Valve (25mm) with Nozzle Interlock	Brass
Wall Bracket/Hose Guide	Mild Steel
Drum Diameter	560mm
Installed Hose Reel (Depth off Mount Surface)	Approx. 215.0mm

Installation and commissioning in accordance to AS1221-1997



Australian Standard  
AS 1221  
LIC SMK1355



# WASH DOWN

## NON STANDARD HOSE REELS

### WASHDOWN HOSE REELS

#### NON STANDARD HOSE REELS

- Designed for non fire-fighting jobs
- Same high quality construction as other BFI hoses and reels

BFI Fire manufacture and offer a range of non standard hose reels that are ideal for non-fire fighting applications such as vehicle and plant wash downs.

This range includes a standard type hose reel as well as continuous flow hose reels. Both types are supplied with a heavy duty hose.



	HRS114-MS-025-YW	HRS059-19	HRS059	HRS059-LA-038-SV
<b>Description</b>	Hi-flow 25m non-standard hose reel	19mm A frame non-standard hose reel	25mm A frame C-flow non standard hose reel	38mm x 30m A frame non-standard hose reel

# FOAM HOSE REEL

## NON STANDARD HOSE REEL

### FOAM HOSE REEL

#### NON STANDARD HOSE REEL

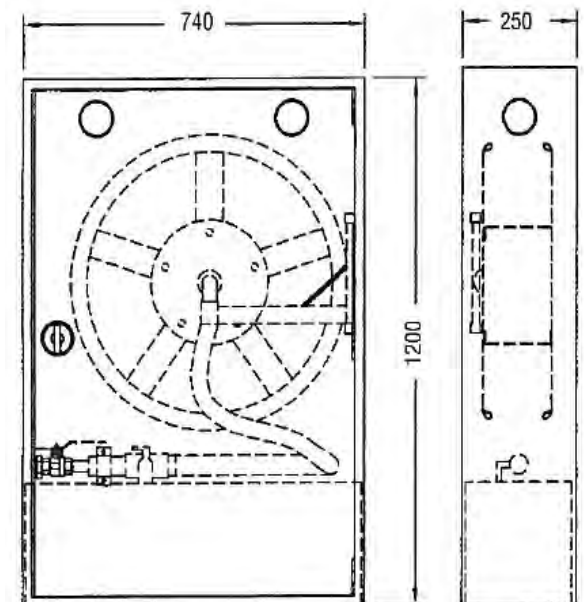
- Designed for use in petrol stations
- Same high quality construction as other BFI hose reels
- Supplied with a brass foam indicator

The foam hose reel comes complete with a foam inductor which is used to supply a mixture of foam concentrate and water. Foam solution is one of the most effective methods of extinguishing fires involving flammable liquids such as petrol and solvents.

Foam hose reels are commonly used in petrol stations and fuel storage as well as oil and solvent storage and work areas.



	FOS088-MS-STD-RD
Hose Length & Diameter	25mm x 30m
Foam Tank Capacity	50L
<b>Test Pressure @ 6 bar</b>	<b>Jet lever Nozzle (Orifice 012mm)</b>
Flow Rate	65.5L per minute
Suction Rate	4.5L per minute
Induction Rate	6.87%
<b>Pressure @ 5 bar</b>	<b>Jet lever nozzle (Orifice 012mm) Brass</b>
Flow Rate	61.5L per minute
Suction Rate	3.5L per minute
Induction Rate	5.691%



Standard assembly includes brass inductor, fibreglass foam tank and mild steel reel. Other materials of construction are available on request.

# FOAM STATION

## NON STANDARD HOSE REEL STATION

### FOAM STATION

#### NON STANDARD HOSE REEL STATION

- For the protection of oil storage, installation loading stations, paint and solvent stores
- Same high quality construction as other BFI hose reels



The hose reel station comes complete with a 1-1/2" x 30m rigid hose, 120 litre AFFF foam, stainless steel 316 foam concentrate storage tank, 95 GPM foam indicator and nozzle. A bypass loop is provided for water or foam discharge.

#### FOS070-SS-STD-RD

Description	Foam hose reel station
Inlet Connection	1-1/2" ANSI 125 FF flange
Hose Reel Material	Aluminium

#### Standard features

Water/foam pistol grip nozzle

Non - ferrous piping and fittings

120L capacity foam and concentrate

1/ 1/2" control valve

Stainless steel pick up tube

150mm opening hole for foam concentrate filling

Adjustable foam concentrate 3% to 6%

# HOSE REEL NOZZLES

## ASSORTED HOSE REEL NOZZLES



### JET SPRAY

HOSE REEL NOZZLES

Code	Description
HRS039A	BFI 19mm jet spray nozzle
HRS039B	25mm brass jet and spray hose reel nozzle



### NOZZLE JET

HOSE REEL NOZZLES

Code	Description
HRS050A	19mm SRI brass nozzle jet
HRS050B	25mm brass jet hose reel nozzle



### VALVE JET

HOSE REEL NOZZLES

Code	Description
HRN19BV	19mm B/valve jet nozzle suits all hose reels



### FOAM JET & SPRAY

HOSE REEL NOZZLES

Code	Description
HRS032A	19mm plastic brass hose reel nozzle GER



### TWIST JET

HOSE REEL NOZZLES

Code	Description
WNT	19mm jet hose reel nozzle twist type

# HOSE REEL ACCESSORIES

## ASSORTED HOSE REEL SPARES



### REPLACEMENT ARM

HOSE REEL ARM  
GUIDE PARTS

Code	Description
HRRAKS	Short replacement hose reel arm guide
HRRAK	Recessed hose reel arm kit
HRS052	Long hose reel guide
HRS052B	Rollerhose guide swivel base



### STOP VALVE

BALL VALVE HOSE  
REEL STOP VALVE

Code	Description
HRS108	Ball valve type hose reel stop valve



### REPLACEMENT HOSE

HOSE REEL HOSE

Code	Description
HRS041	36m x 19mm hose reel hose
HRS041-R	36m x 19mm hose reel hose red
HRS042	25mm x 30m hose reel hose to AS1221
HRS041-50	19mm x 50 meter hose reel hose to AS1221



### UNION COUPLING

HOSE REEL

Code	Description
FIT102-GI-025-XX	Hose reel union coupling 25mm



### WALL BRACKET

HOSE REEL

Code	Description
HRP060-MS	Hose reel wall bracket, Mod type

# HOSE REEL SPARES

## HOSE REEL SPARES

### HOSE REEL STANDS

#### HOSE REEL STANDS

These stands are made locally in Australia to a very high standard. They are guaranteed to suit our full range of BFI hose reels.

	HRSTANDHD	HRSTAND
<b>Description</b>	Stand to suit BFI hose reels	Stand to suit BFI hose reels
<b>Constructed</b>	Hot dipped galvanised finish	Cold sprayed galvanised finish



### HOSE REEL SPARES

#### SWIVEL LUGS

Code	Description
HRP371-GM-019	Swivel lug, connecting complete - 19mm
HRP371-GM-025	Swivel lug, connecting complete - 25mm
HRP371-GM-038	Swivel lug, connecting complete - 38mm



### HOSE REEL SPARES

#### FIGURE EIGHT NOZZLE RETAINERS

Code	Description
KX10-009-00N	Figure eight nozzle retainer - nylon
KIX10-009-00	Figure eight metal nozzle retainer



### HOSE REEL SPARES

#### SPRING CLIP NOZZLE RETAINER

Code	Description
TDNHAS12	Hose reel nozzle retaining spring clip
HRQRK	Hose reel nozzle retaining spring clip





# SERVICING CONSUMABLES

BFI Fire carry a large range of servicing consumables.



[www.bfire.com.au](http://www.bfire.com.au)

# CONSUMABLES

## DRY CHEMICAL POWDER

### DRY CHEMICAL POWDER ABE POWDER



Code	Description
BFIHP-ABE	50kg drum BFI high performance dry chemical powder ABE 80% (blue)
BFISTD-ABE	50kg drum BFI standard dry chemical powder ABE 50% (blue)
BFISTD-BE	50kg drum BFI standard dry chemical powder BE (white)

# CONSUMABLES

## FOAM PRODUCTS

### AQUEOUS FILM FORMING FOAM

#### A.F.F.F 3% & 6% FOAM

- **Flow properties** - this foam has the ability to spread over a burning surface and cover it rapidly - shortening the fire's extinguishing time.
- **Burn back resistance** - resistant to the effects of flames and radiant heat. When the foam is dried out, it forms a blanket, creating an insulating effect that prevents reignition.

BFI A.F.F.F is a liquid foam concentrate, that when mixed in controlled proportions with either fresh or salt water, produces a vapour suppressing film forming foam.



	SG320	SG3200	SG31000	SG620	SG6200	SG61000
<b>Description</b>	20L 3% AFFF foam solution	200L 3% AFFF foam solution	1000L 3% AFFF foam solution	20L 6% AFFF foam solution	200L 6% AFFF foam solution	1000L 6% AFFF foam solution
<b>Size</b>	20L	200L	1000L	20L	200L	1000L
<b>Weight</b>	21.5kg					
<b>Appearance</b>	Pale yellow liquid					
<b>Density</b>	1.01 + or - 0.02					
<b>PH Value</b>	Approximately 7.5					
<b>Surface Tension</b>	Approximately 18.5					
<b>25% Drainage Time</b>	3 minute, 30 seconds minimum					
<b>Ionic Character</b>	Contains anionic & atmospheric surfactants					
<b>Surface Tension</b>	Concentrate 16mN/m finished foam 3% 20nN/m			Concentrate 16mN/m finished foam 6% 20nN/m		
<b>Proportioning</b>	3 parts BFI A.F.F.F to 97 parts water. The best water for generating foam is rain water or drinking water. However treated industrial water, river and sea water are all suitable			6 parts BFI A.F.F.F to 94 parts water. The best water for generating foam is rain water or drinking water. However treated industrial water, river and sea water are all suitable		

# CONSUMABLES

## FOAM PRODUCTS

### WET CHEMICAL WET CHEMICAL

BFI wet chem is used as a saponifying agent for combating cooking oil and fat fires. It can be used in both portable fire extinguishers and fixed systems.



	SG21WC	SG200WC	SG1000WC
Description	20L wet chemical concentrate	200L wet chemical concentrate	1000L wet chemical concentrate
Size	20L	200L	1000L
Weight	28.5kg	290kg	-
Appearance	Clear, odourless, colourless in colour liquid		
Density	1.01 + or - 0.02		
PH value	8.0 + 9.0		
Boiling point	100°C		
Freezing point	0°C		
Conforms with	AS 1841.3 - 1992		

\*Batch number and certificate of compliance available upon request at time of purchase

# CONSUMABLES

## FOAM PRODUCTS

### BERKICOLD FOAM BIODEGRADABLE FOAM

- High fire fighting rating
- Biodegradable
- Free from PFOS & PFOA
- Non corrosive & alcohol resistant

Berkicold is our fluorine, PFOS and PFOA free foam additive. This non-corrosive and alcohol resistant foam is suitable for use on A, B and F rated fires.

Available in concentrate and pre-mix.



	BERKICOLD20L	BERKICPM
Description	20L Berkicold foam drum	20L Berkicold pre-mix foam drum
Size	20L drum	20L drum
% Berkicold	100%	10%
Weight	21.5kg	21.5kg
Appearance	Clear, pale, yellow, liquid	
PH value	6.5 to 8.5	

Other quantities available on request

# BERKICOLD

# CONSUMABLES

## FOAM PRODUCTS

### HIGH EXPANSION HIGH EXPANSION FOAM

- **Contains no butyl glycol ether** - commonly used as a stabiliser. The foam stabilising agent used is based on a natural coconut oil derivative.
- **Non flammable** - contains no flammable components.
- **Biodegradable** - contains only biodegradable surfactants according to AS 1792-1976.
- **Non reactive and non corrosive** to most materials including; metals, plastics, rubber seals and more.

This foaming agent is based on a blend of anionic surfactants, nonionic & amphoteric surfactants and foam control agents.



	SG20HIEX	SG200HIEX	SG1000HIEX
Description	20L BFI high expansion foam	200L 6% AFFF foam solution	1000L 6% AFFF foam solution
Size	20L	200L	1000L
Weight	21.5kg		
Appearance	Clear, pale, yellow, slightly viscous liquid		
Active Matter	30%		
PH Value	6.0 (+/-0.5)		
Chloride	0.1% MAX		
Sulphate	0.2% MAX		
Hazchem	Classified non-hazardous		

# CONSUMABLES

## FOAM PRODUCTS

### 6% FLUORINE FREE FOAM FLUOROPROTEIN FOAM

- For use on all class B hydrocarbon fuels such as diesel, jet fuel and petrol.
- Suitable for use through all types of fixed systems, sprinkler systems, in-line proportioners (fixed or portable), branchpipes and monitors.
- Suitable for long term storage, with a storage life of 10 years.

This foam can be used with soft or hard water, fresh, salt and brackish water.



	SG620F3FF	SG6200F3FF	SG61000F3FF
Description	20L 6% fluorine free	200L 6% fluorine free	1000L 6% fluorine free
Size	20L	200L	1000L
Weight	23.5kg	250kg	
Appearance	Clear, translucent slightly viscous liquid.		
Viscosity	2000 - 3000 mPas		
PH Value	7.0 - 7.2		

Also available in 3%.

# CONSUMABLES

## FOAM PRODUCTS

### FIRE FIGHTING 'A' CLASS FOAM 'A' CLASS FOAM

- **Contains no butyl glycol ether** - commonly used as a stabiliser. The foam stabilising agent used is based on a natural coconut oil derivative.
- **Non flammable** - contains no flammable components.
- **Biodegradable** - contains only biodegradable surfactants according to AS 1792:1976.
- **Non reactive and non corrosive to most materials including; metals, plastics, rubber seals etc.**

This foaming agent is based on a blend of anionic surfactants, nonionic & amphoteric surfactants and foam control agents.



	SG20A	SG200A	SG1000ARC
Description	20L arc foam	200L arc foam	1000L arc Foam
Size	20L	200L	1000L
Weight	21.5kg	220kg	
Appearance	Clear, pale, yellow, slightly viscous liquid		
Active Matter	>30%		
PH Value	7.0 (+/-0.5)		
Induction	0.1% MAX		
Chloride	0.1% MAX		
Sulphate	0.2% MAX		
Hazchem	Classified non-hazardous		



# CONSUMABLES

## FOAM PRODUCTS

### FIRE TRAINING FOAM

#### FIRE FIGHTING FOAM

- Low cost
- Fast fire knock out
- Clings to vertical surfaces
- Effective in soft, hard or sea water
- Suitable for a wide range of low, medium and high expansion equipment
- Disperses rapidly from the fire pit, allowing further training runs with a minimum delay
- Long shelf life - in excess of 4 years
- Low order of personal and environmental hazards, rapidly biodegraded

Training foam has been specifically designed for the production of the expanded foam for fire fighting training sessions.



	SG20TRAIN	SG200TRAIN	SG1000TRAIN
Description	20L training foam	200L training foam	1000L training foam
Size	20L	200L	1000L
Weight	21.5kg	220kg	-
Appearance	Coloured green to distinguish the product from AFFF and other foams		
Diluted	50:50 with water prior to use with equipment having fixed or adjustable venturi pickup, or can be diluted to any concentration to suit the type of foam generation equipment.		
Toxicity	Completely non toxic. No hazard to skin or eye contact from a spillage.		
Product	Synthetic foam compound for use in training personnel and testing foam generating apparatus.		
Relight	Fire can be re-lit, without further priming when safe to do so.		

# CONSUMABLES

## FOAM PRODUCTS

### STRYKERGREEN FOAM

#### BIODEGRADABLE FOAM

- High fire fighting rating
- Biodegradable
- Free from PFOS & PFOA
- Non corrosive & alcohol resistant

StrykerGreen is our fluorine, PFOS and PFOA free foam additive. This non-corrosive and alcohol resistant foam is suitable for use on A, B and F rated fires.

Available in concentrate and pre-mix.



	STRYKERGREEN BFS-0113-G	STRYKERGREEN BFS-0113-G-PM
Description	20L StrykerGreen concentrate foam drum	20L StrykerGreen pre-mix foam drum
Size	20L drum	20L drum
% StrykerGreen	100%	6%
Weight	21.5kg	21.5kg
Appearance	Clear, pale, yellow, liquid	
PH value	6.5 to 8.5	

Other quantities available on request

# HYDRANTS, BOOSTERS, CAPS AND SPANNERS

BFI Fire manufacture and carry a full range of valves and boosters for all types of fire hydrants. We also stock hydrant caps, locking devices, adaptors and fittings.



[www.bfire.com.au](http://www.bfire.com.au)

# BOOSTER VALVE

## HORIZONTAL BACK ENTRY

### BOOSTER VALVE HORIZONTAL BACK ENTRY



- Meets AS2419.3:2012 standards
- SAI Global “five tick” approval
- Single point or tank model boosters available
- Watermark certificate of conformity-level 1
- Made from LG2 brass

BFI Fire hydrant boosters are constructed from brass, they effectively increase available water from hydrants. The brass construction delivers a reliable boost to water pressure within the connected hydrant system.



Australian  
Standard  
AS 2419.3  
LIC SMK1355

	WRS113-LG2-5TPI	WRS113-LG2-QRT	WRS113-LG2-BI	WRS113-LG2-STZ
<b>Description</b>	5TPI (NSW) booster back entry	QRT booster back entry	BI booster back entry	STORZ booster back entry
<b>Design Approval</b>	AS2419.3 - 1996	AS2419.3 - 1996	AS2419.3 - 1996	AS2419.3 - 1996
<b>Pressure Test</b>	2100 kPa	2100 kPa	2100 kPa	2100 kPa
<b>Pressure Loss</b>	Not exceeding 30kPa @ 10L	Not exceeding 30kPa @ 10L	Not exceeding 30kPa @ 10L	Not exceeding 30kPa @ 10L
<b>Installation and Commissioning</b>	Comply to AS2419.1	Comply to AS2419.1	Comply to AS2419.1	Comply to AS2419.1
<b>Outlet</b>	4" rolled groove	4" rolled groove	4" rolled groove	4" rolled groove
<b>Finish</b>	Signal red	Signal red	Signal red	Signal red
<b>Material</b>	Brass	Brass	Brass	Brass

# BOOSTER VALVE

## VERTICAL BOTTOM ENTRY

### BOOSTER VALVE

#### VERTICAL BOTTOM ENTRY

- Meets AS2419.3:2012 standards
- SAI Global “five tick” approval
- Single point or tank model boosters available
- Watermark certificate of conformity-level 1
- Made from LG2 brass
- Available in twin point back and bottom entry 100mm RG



BFI Fire hydrant boosters are constructed from brass. The brass construction delivers a reliable boost to water pressure within the connected hydrant system.



Australian Standard  
AS 2419.3  
LIC SMK1355

	WRS114-LG2-5TPI	WRS114-LG2-QRT	WRS114-LG2-BI	WRS114-LG2-STZ
<b>Description</b>	Vertical booster valve C/W 5TPI inlet	Vertical booster valve C/W QRT inlet	Vertical booster valve C/W BI inlet	Vertical booster valve C/W STORZ inlet
<b>Design Approval</b>	AS2412.3	AS2412.3	AS2412.3	AS2412.3
<b>Pressure Test</b>	Body: 28bar, Seat: 21bar, Min 5 minutes, PN 14			
<b>Pressure Loss</b>	Not exceeding 30kPa @ 10L	Not exceeding 30kPa @ 10L	Not exceeding 30kPa @ 10L	Not exceeding 30kPa @ 10L
<b>Installation and Commissioning</b>	Comply to AS2419.1	Comply to AS2419.1	Comply to AS2419.1	Comply to AS2419.1
<b>Outlet</b>	4" rigid rolled groove	4" rigid rolled groove	4" rigid rolled groove	4" rigid rolled groove
<b>Finish</b>	EFD-2312	EFD-2312	EFD-2312	EFD-2312
<b>Material</b>	Brass	Brass	Brass	Brass

# HYDRANT VALVES

## FIRE HYDRANT VALVES

### HYDRANT VALVES

#### FIRE HYDRANT VALVES

- SAI Global “five tick” approval
- Options from large high-flow to compact cost-effective units
- Right-angled valves
- 12 month warranty
- Watermarked



BFI Fire supplies valves for use on a wide range of fire hydrant types. They all adhere to AS2419.1 and AS2419.2 standards, making them suitable for use in every state of Australia.

Installation and Commissioning	AS2419.1 / AS2419.2
Test Pressure	2.7MPa
Pressure Loss	25kPa @ 25L/S
Contamination of Water	Complies to AS3855



Australian Standard  
AS 2419.2  
LIC SMK1355



# HYDRANT VALVES

## FIRE HYDRANT VALVES

### HYDRANT VALVES (CONTINUED)

#### FIRE HYDRANT VALVES

Code	Valve Inlet	Valve Outlet
HVFBTN	65mm male BSP hydrant valve	2½" NSW FBT male thread
HVFBTNT2	T2 65mm male BSP hydrant valve	2½" NSW FBT male thread
HVFBTRG	80mm roll groove hydrant valve	2½" NSW FBT male thread
HVFBTRGT2	T2 80mm roll groove hydrant valve	2½" NSW FBT male thread
HVFBTSH	Shouldered 80mm roll groove hydrant valve	2½" NSW FBT male thread
HVQRTRG	80mm roll groove hydrant valve	2½" QLD QRT male thread
HVQRTRGT2	T2 80mm roll groove hydrant valve	2½" QLD FBT male thread
HVQRT	65mm male BSP hydrant valve	2½" QLD QRT male thread
HVQRTT2	T2 65mm male BSP hydrant valve	2½" QLD QRT male thread
HVBI	65mm male BSP hydrant valve	2½" British instantaneous female
HVBIT2T2	T2 65mm male BSP hydrant valve 65mm BI outlet	2½" British instantaneous female
HVBIRG	80mm roll groove hydrant valve	2½" British instantaneous female
HVBIRGT2	T2 80mm roll groove hydrant valve 65mm BI T2 outlet	2½" British instantaneous female
HVSTZ	80mm roll groove hydrant valve	2½" forged STORZ

# SPARES

## HYDRANT AND BOOSTER



**HYDRANT VALVE COVER**  
RED NED KELLY

Code	Description
HVCH	Hydrant valve cover with hole. Red Ned Kelly type



**SPANNER COUPLING AND HYDRANT**

Code	Description
1343	Coupling and hydrant spanner



**HAND WHEEL**  
CAST IRON

Code	Description
HVHW	Cast iron hand wheel



**COCK**  
BRASS HOSE

Code	Description
106150	3/4" BSP brass hose cock
106151	3/4" BSP 184 turn brass hose cock



**SPINDLE**  
HYDRANT VALVE

Code	Description
HVSPIN	Spindle BFI hydrant valve



**PRESSURE GAUGES**

Code	Description
PG-100-1600-1/2	100mm pressure gauge 0-1600 x 15mm BSP
PG-100-2500-1/2	100mm pressure gauge 0-2500 x 15mm BSP
PG-65-2500-1/2	65mm pressure gauge 0-2500 x 15mm BSP
PG-65-2500-1/4	65mm pressure gauge 0-2500 x 8mm BSP



**JUMPER ASSEMBLY**  
HYDRANT VALVE

Code	Description
HVJV	Hydrant valve jumper assembly



# SPARES

## HYDRANT AND BOOSTER

### CAPS

#### HYDRANT AND BOOSTERS

Code	Description
HVCCPQRT	UPVC cap & chain QRT
HVCCBQRT	65mm QRT brass cap & wire
HVCCPSART	UPVC cap & chain SART
HVCCBSART	65mm brass cap & chain SART
HVCCPSTZ	UPVC cap & chain storz
HVCCPFBT	UPVC cap & stainless steel wire NSW FBT
HVCCBFBT	65mm FBT brass cap & chain
MIS001-P	65mm BI male poly blanking cap UV RES.
MIS001-LA-065-NA	BI male blanking plug alloy
MIS001-GM-065-NA	BI male blanking cap GM



### PLUGS

#### HYDRANT AND BOOSTERS

Code	Description
HYC486-PS-QRT-BK	Plastic plug male QRT
HYC486-PS-SRT-BK	Plastic plug male SART
HYC486-PS-5TPI-RD	Plastic plug male 5TPI
HYC486-PS-SRT-BK	Plastic plug male SART



### BALL VALVES

#### HYDRANT AND BOOSTERS

Code	Description
MNBVMF-8	8mm BSP brass chromed ball valve
MNBVMF-10	10mm BSP brass chromed ball valve
MNBVMF-15	15mm BSP brass chromed ball valve



# SPARES

## HYDRANT AND BOOSTERS

### NSW FBT ADAPTORS

Code	Description
F63F20BM	63FBT FEM X 20 BSP male adaptor
F63F25BM	64FBT FEM X 25 BSP male adaptor
F63F38BM	63FBT X 38 BSP male adaptor
F63F50BM	63FBT FEM X 50 BSP male adaptor
F63F65BM	63FBT FEM X 65 BSP male adaptor



Code	Description
M64M50BM	64FBT male x 50 BSP male adaptor
M64M64BM	64FBT male x 64 BSP male adaptor



### BI ADAPTORS

Code	Description
MISO11-50	BI male 50mm BSP FEM adaptor alum alloy
MISO11-65	BI male 65mm BSP FEM adaptor LA
MISO17-GM-65-NHT	BI male 65mm NHT female adaptor G.M
MIS116-LA-38BSP	BI male 38mm BSP male adaptor
MIS116-LA-50BSP	BI male 50mm BSP male adaptor
MIS116-LA-65BSPM	BI male adaptor 65mm BSP male LA
MISO17-GM-65BSPT	BI male 65mm BSP male adaptor G.M



Code	Description
HYDO68-50	BI FEM 50mm BSP FEM adaptor LA
HYDO68-65	BI FEM 65mm FEM adaptor LA
HYDO69-50	BI 50mm FEM BSP adaptor copper alloy
HYDO69-65	BI 65mm FEM BSP adaptor copper alloy
MISO10-LA-50BSPT	65 BI female 50 BSP male LA
MISO10-LA-65BSPT	BI female 65mm BSP male aluminium adaptor
MISO05	BI FEM 65mm blank cap aluminium adaptor



# SPARES

## HYDRANT AND BOOSTERS

### QRT ADAPTORS

Code	Description
F63R20BM	63 QRT FEM 20mm BSP male brass hyd adaptor
F63R25BM	63 QRT FEM 25mm BSP male brass hyd adaptor
F63R50BM	63 QRT FEM 50mm male brass hyd adaptor
F63R65BM	63 QRT FEM 65mm BSP male brass hyd adaptor



Code	Description
M64R50BM	64 QRT male 50 BSP male adaptor
M64R64BM	64 QRT male 64 BSP male adaptor



### SART ADAPTORS

Code	Description
F63S25ABM	Adaptor 63SAFB FEM 25 mm BSP male alloy
F63S38ABM	Adaptor 63SAFB FEM 38mm BSP male alloy adaptor
F63S50ABM	Adaptor 63 SAFB FEM 50mm BSP male alloy



### STORZ CAPS

Code	Description
ST25BLCAP	25mm ST blank cap & chain
ST38BLCAP	ST 38mm blanking caps
ST50BLCAP	ST 50mm blanking caps
ST65BLCAP	65mm ST blanking cap & chain alloy
ST100BLCAP	100mm ST blanking cap & chain
ST125BLCAP	125mm ST blanking cap & chain alloy
ST150BLCAP	150mm ST blanking cap alloy

# SPARES

## HYDRANTS AND BOOSTERS

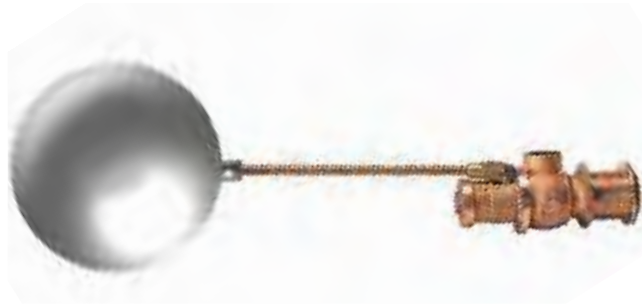
### STORZ ADAPTORS

Code	Description
ST2519FAD	25mm ST x 19mm BSP FEM adaptor alloy
ST2525FAD	25mm ST x 25mm ST BSP FEM adaptor alloy
ST3838FAD	38mm ST x 38mm BSP FEM adaptor alloy
ST3851FAD	38mm ST x 51mm BSP FEM adaptor
ST5050FAD	50mm ST x 50mm BSP FEM adaptor
ST5050FADGM	50mm ST x 50mm BSP FEM adaptor brass
ST6438FADA-FORG	65 STZ 38mm BSP FEM forged alloy adaptor
ST6551FAD	65mm ST x 51mm BSP FEM adaptor alloy
ST6464FADA	64mm ST x 64mm BSP FEM adaptor
ST6464FADAFORG	65mm ST x 65 mm BSP FEM forged alloy adaptor
ST6464FADAGM	ST64 x 64mm BSP FEM adaptor G.M
ST64NSWF	Adaptor 65m ST x NSWFB FEM
ST64NSWF-FORG	Adaptor 65mm ST x NSWFB forged alloy G.M
ST64NSWFGM	Adaptor 65mm ST x NSWFB alloy G.M
ST8080FAD	80mm ST x 80mm BSP FEM adaptor alloy
ST100100FAD	100mm ST x 100mm BSP FEM adaptor
ST125125FAD	125mm ST x 125mm FEM adaptor
ST150150FAD	150mm ST x 150mm BSP FEM adaptor
ST2519MAD	25mm ST x 19mm male adaptor alloy
ST2525MAD	25mm ST x 25mm male BSP adaptor alloy
ST3838MAD	38mm ST x 38mm BSP male adaptor alloy
ST5151MAD	50mm ST x 50mm BSP male adaptor alloy
ST6552MAD	65mm ST x 2" BSP male adaptor alloy
ST6565MAD	65mm ST x 65mm BSP male adaptor alloy
ST6565MADFG	65mm ST x 65mm BSP male adaptor forged alloy
ST64NSWM	64mm ST x 64 mm FBT male adaptor
ST100100MAD	100mm ST x 100mm BSP male adaptor alloy
ST150150MAD	150mm ST x 150mm BSP male adaptor alloy



# SPARES

## HYDRANTS AND BOOSTERS



### BALL FLOAT VALVE

Code	Description
SPR103-GM-050	50mm ball float valve for water tank
SPR103-GM-080	80mm ball float valve for water tank
SPR103-GM-100	100mm ball float valve for water tank

### COPPER TO ROLL GROOVE ADAPTORS

Code	Description
FFS-BA-100CU114RG	100mm copper roll grooved adaptor
FFS-BA-150CU165RG	165mm copper roll grooved adaptor
FFS-BA-80CU89RG	80mm copper roll grooved adaptor



### COVENTRY ADAPTOR

Code	Description
AD125C15OR	Adaptor 125 COV x 150 RG swivel C/W plug



### TEST POINTS

\* Alloy plug not included

Code	Description
TPQRTFXRGBSPF65	Test Point QRT FEM x RG / 65 BSPF Alloy



# HOSES, MONITORS, NOZZLES AND ADAPTORS

BFI Fire supplies a large range of lay-flat hoses, fittings and adaptors for firefighting and wash down purposes. Powerful and effective, the hoses are easily stored and come in varied widths, lengths, materials and colours. All hoses purchased with fittings are tested in our Newcastle warehouse and supplied with a test certificate.



[www.bfire.com.au](http://www.bfire.com.au)

# LAY-FLAT HOSES

## LAY-FLAT HOSES

### LAY-FLAT HOSES

#### RED & WHITE LAY-FLAT HOSES

- High quality, durable construction
- Red and white models available
- Australian Standard Approved (H class models only)
- Assemblies available with fittings attached via wire whipping or bandit clamping
- Bare hose, or fully fitted hose assemblies available

BFI Fire offer a range of hoses, nozzles and adaptors. They're easily stored and come in varied widths, lengths, materials and colours.

All hoses supplied with fittings are tested in our Newcastle warehouse and supplied with test certificates.



	Description
383ORAPIER	38mm x 30m red extruded H class
643ORAPIER	64mm x 30m red rapier hose H class
383OLF16	38mm x 30m white lay-flat F/H 16 bar
643OLF16	64mm x 30m white lay-flat F/H 16 bar
383OARMTEX	38mm x 30m red extension hose - armtex H class
643OARMTEX	64mm x 30m red extension hose - armtex H class

# LAY-FLAT HOSE

## ACCESSORIES



### LAY-FLAT HOSE CRADLE & SUCTION HOSE STAND

	Description
WRS081-MS-065	Hose cradle
MIS268-MS-STD-RD	Suction hose stand MS



### HOSES COUPLINGS COUPLING SETS

	Description
WR110	65mm BI X 38 tail L - alloy coupling set
WR112	65mm BI x 40 tail GM coupling set
WR200	BI coupling x 50mm tail L.A set
WR079	65BI x 63mm tail hose L.A coupling set
WR080	65 x 65BI hose LG2 set



# ADAPTORS & COUPLINGS

## HOSE COUPLINGS



### BSP HOSE COUPLINGS

HOSE COUPLINGS

	Description
F38BNTG	38mm BSP FEM coupling
F38BMEG	38mm BSP male coupling



### NSW FBT COUPLINGS

HOSE COUPLINGS

	Description
F63F38NTG	63FBT X 38 tail (F) coupling
F63F38MEG	63FBT x 38 tail (M) coupling
F63F50NTG	63mm hose coupling (F) x 50 tail
F63F50MEG	63mm hose coupling (M) x 50 tail
F63NTG	63FBT x 63 tail (M) hose coupling gunmetal
F63MEG	63FBT x 63 tail (M) hose coupling gunmetal



### QRT COUPLINGS

HOSE COUPLINGS

	Description
F63R38NTG	63mm QRT X 38mm tail (F) coupling - brass
F63R38MEG	63mm QRT x 38mm tail (M) coupling - brass
F63RNTG	63mm QRT x 63mm tail (F) coupling - brass
F63RMEG	63mm QRT x 63mm tail (M) coupling brass



### SART COUPLINGS

HOSE COUPLINGS

	Description
F63S38ANTG	63mm X 38mm SART alloy (F) coupling
F63S38AMEG	63mm X 38mm SART alloy (M) coupling
F63S64ANTG	63mm X 63mm SART alloy (F) coupling
F63S64AMEG	63mm X 63mm SART alloy (M) coupling

# ADAPTORS & COUPLINGS

## HOSE COUPLINGS



### NAKAJIMA HOSE TAIL FITTINGS & ADAPTORS

Code	Description
NAK40COUP38	40mm Nakajima x 38mm hose tail (brass)
NAK50COUP5	50mm Nakajima x 50mm hose tail (brass)
NAK65COUP65	65mm Nakajima x 65mm hose tail (brass)
NAK4038MAD	40mm Nakajima x 38mm male BSP adaptor (brass)
NAK5038MAD	50mm Nakajima x 38mm male BSP adaptor (brass)
NAK6565FAD	65mm Nakajima x 65mm female BSP adaptor (brass)



### SHIP TO SHORE FLANGE ADAPTOR

Code	Description
MIS117-GM-50BSP	Adaptor flange - Male 50mm BSP x shipshore



### BREECH PIECE STATE THREAD ADAPTABLE

Code	Description
MIS224	Breaching piece adaptable to state thread

CONTROLLED BREECHING PIPES  
ARE ALSO AVAILABLE

# BRANCHPIPES AND NOZZLES

## ASSORTED NOZZLES



### JET SPRAY NOZZLE

ASSORTED JET SPRAY NOZZLES

Code	Description
JSN008	38mm BSP female jet spray nozzle (brass)
JSN011	25mm BSP female jet spray nozzle (aluminium)
KX07-023-00	25mm BSP female jet spray nozzle (brass)
PJN025	25mm jet spray nozzle
PJN038	38mm jet spray nozzle
WR099	Diffuser nozzle LA jet spray Bl
WR099FBT	FBT/MFB diffuser jet spray nozzle (aluminium)
VIPERVTE1150-025	Viper nozzle twist type 25mm - 125LPM
VIPERVTE2510 - 038	Viper nozzle twist type 38mm - 360LPM



### PISTOL GRIP NOZZLES

VARIOUS PISTOL GRIP NOZZLES

Code	Description
BLUEDEV-3012	Blue devil nozzle pistol grip 115-475LPM 38mm
BLUEDEV-1560	Blue devil nozzle pistol grip
FOG-LA-038-BK	SRI pistol grip nozzle J/F 38mm BSP female
FOS005-LA-050-BK	Handline nozzle auto pistol grip
VIPER1560-025	Viper nozzle pistol grip 50-230LPM 25mm
VIPER7515-038	Viper nozzle pistol grip 265-600LPM
VIPER9520-065	Viper nozzle pistol grip 350-800LPM

# BRANCHPIPES

## BRANCHPIPES

### BRANCHPIPES

VARIOUS  
BRANCHPIPES



Code	Description
WRS078-LA-050-LA	50mm male branch pipe ball valve type
AWG-BR60324433	Branchpipe W/Jet/Curtain
WRS101-LA-STD-NA	Diffuser nozzle LA J/Spray C/W branchpipe BI

# FOAM BRANCHPIPES

## FOAM BRANCHPIPES & INDUCTORS



### FOAM INDUCTORS

#### FOAM INDUCTORS

Foam concentrate is drawn through a pick up tube at a preset foam concentrate amount and is added into the water stream. Available in two flowrates, these inductors are supplied with a flexible foam concentrate suction hose and a BS 336 instantaneous inlet and outlet connection.

	FOS004-LA-225-YW	FOS004-LA-450-YW
Description	Portable foam inductor C/W P/U tube	Foam inductor C/W P/U tube
Flowrate @ 101Psi (7bar)	225 LPM	-
Throw Range @ 101Psi (7bar)	450 LPM	-
Body Material	Aluminium alloy and gun metal	
Foam Concentrate - adjustable rate	1% to 6%	1% to 6%

### EXPANSION FOAM BRANCHPIPES

#### MEDIUM & LOW EXPANSION BRANCHPIPES



	FOS010-SS-250-YW	FOS010-SS-450-YW	FOS003-LA-450-YW	FOS008-LA-450-YW	FOS008-LA-450-YW
Description	Medium exp. foam B/pipe	Medium exp. foam B/pipe	Low exp. foam B/pipe	Low exp. foam B/pipe	Low exp. foam B/pipe
Flowrate @ 101Psi (7bar)	250 LPM	450 LPM	450 LPM	450LPM @ (7 bar)	450LPM @ (7 bar)
Throw Range @ 101Psi (7bar)	3 to 8m	3 to 8m	-	18 to 22m	20 to 25m
Body Material	Stainless steel	Stainless steel	Aluminium alloy	Aluminium alloy	Aluminium alloy
Suitable for Use with	AFF, protein and AR foam	AFF, protein and AR foam	AFF, protein and AR foam	AFF, protein and AR foam	AFF, protein and AR foam
Expansion Ratio	50	50	7/8	7/8	7/8
Inlet	BS 336 instantaneous male				

All foam branchpipes are available with integral foam inductor and pick up tube

# SIGNS AND LABELS

BFI Fire stock a large range of signs and labels that compliment the products we manufacture and sell. We also stock a range of location, fire exit and pressure test stickers and signs.



[www.bfire.com.au](http://www.bfire.com.au)

# SIGNAGE

## IDENTIFICATION SIGNS

### IDENTIFICATION

#### EXTINGUISHER DISC WALL SIGNS

These wall disc signs are produced in a standard material as well as a high performance UV stabilised version, making them ideal for use in any environment.

	Description
IDDB	DCP (BE) I.D. disc
IDC	CO <sub>2</sub> I.D. disc
IDF	Foam I.D. disc
IDDA	DCp (ABE) i.D. disc
IDWC	Wet chemical I.D. disc
IDW	Water I.D. disc

	Description
IDF-HP	Foam I.D. disc UV stabilised
IDDA-HP	DCP (ABEO) I.D. disc UV stabilised
IDDB-HP	DCP (BE) I.D. disc BE UV stabilised
IDC-HP	CO <sub>2</sub> I.D. disc UV stabilised
IDWC-HP	Wet chemical I.D. disc UV stabilised
IDW-HP	Water I.D. disc UV stabilised



# SIGNAGE

## IDENTIFICATION SIGNS



**FIRE HOSE REEL**  
IDENTIFICATION SIGN

Codes	Description
SPHRSS	Hose reel sign - small
SPHRS	Hose reel sign - medium
SPHRSRA	Hose reel sign - small right angle
SPHRSS-HP	Hose reel sign small UV stabilised
SPHRS-HP	Hose reel sign medium UV stabilised



**FIRE EXTINGUISHER**  
IDENTIFICATION SIGN

Codes	Description
LSFEP	Small extinguisher sign
LSFEM	Medium extinguisher sign
LSFEL	Large extinguisher sign
LSFEP-HP	Small extinguisher location sign - UV stable
LSRAFEPM	Medium extinguisher location sign right angle



**FIRE BLANKET**  
IDENTIFICATION SIGN

Code	Description
LSFBP	Fire blanket sign
LSFBPRA	Fire blanket sign - right angle

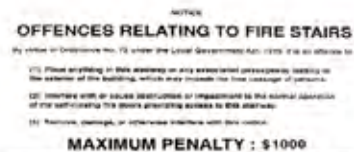
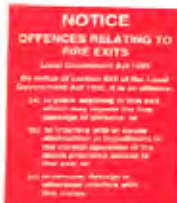
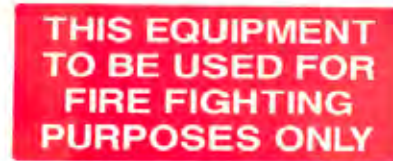
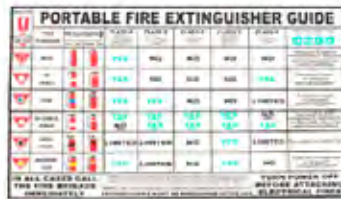


# SIGNAGE

## FIRE RELATED LOCATION SIGNS

### FIRE RELATED LOCATION SIGNS

EXITS, DOORS, STAIRS, LIFTS AND MORE



Code	Description
HYDS	Fire hydrant sign 400mm x 100mm
LSFFD	Fire door do not obstruct sign
LSFFDHO	Fire door do not obstruct or hold open sign
SEP	PVC exit sign reflective
SEPA	PVC exit signs reflective C/W arrow
LSFFS	Offences relating to fire stairs sign
LWEFP	Fire fighting purposes only sign
RACE	Emergency procedure signs
LALIF	Do not use lift sign
KYFEC	Know your fire extinguisher chart - large sign
LSFFE	Offences relating to fire exits sign

# EXTINGUISHER SIGNAGE

## LABELS AND STICKERS

### EXTINGUISHER PICTOGRAPH STICKERS

FIRE EXTINGUISHER



	Description
STPF	Pictograph - large sticker, suits air foam, 130mm x 45mm
STPAW	Pictograph - large suits air water, 130mm x 45mm
STPABE	Pictograph - large sticker suits ABE, 130mm x 45mm
STPBE	Pictograph - large suits BE, 130mm x 45mm

### EXTINGUISHER LABELS

FIRE EXTINGUISHER LABELS



	Description
SLCO2	Label CO <sub>2</sub> 140mm x 675mm
SLABES	Label DCP ABE small 110mm x 245mm
SLABEL	Label DCP ABE large 125mm x 600mm
SLBES	Label DCP BE small 110mm x 245mm
SLBEL	Label DCP BE large 125mm x 600mm
SLAW	Label air water 160mm x 295mm
SLAF	Label air foam 160mm x 295mm
SLWC	Label wet chemical 160mm x 295mm



# SIGNAGE

## PRESSURE STICKERS & MISC.

### PRESSURE TEST STICKERS



	Description
STPT	Pressure test sticker blank MPa
STPT2	Pressure test sticker 2MPa
STPT2.5	Pressure test sticker 2.5MPa

### UNIVERSAL BANDS STICKERS



	Description
SLUWB	Universal white band for ABE, 50mm x 500mm
SLBLACK	Black band for CO <sub>2</sub> , 50mm x 500mm
SLBLUE	Blue band for air foam, 50mm x 500mm
SLOAT	Oatmeal band for wet chemical, 50mm x 500mm

# VEHICLE SUPPRESSION SYSTEMS

BFI Fire can provide you with a fire suppression system that offers reliable protection from fire and suits your needs and budget. It will give you the peace of mind that your vehicles, workspaces and people are prepared for and protected from a fire.



[www.bfire.com.au](http://www.bfire.com.au)

# VEHICLE SUPPRESSION

## FIRE SUPPRESSION SYSTEMS

### FIRE SUPPRESSION SYSTEMS

#### VEHICLE FIRE SUPPRESSION SYSTEMS

BFI have broadened our range of suppression products, enabling us to offer the best solutions to meet our customer needs.

We offer StrykerGreen and Dafo suppression systems to our customers. Both of these systems are manufactured to the highest standards and are certified to AS 5062:2016.

BFI Fire are the sole distributor for Dafo-Australia in Australia and New Zealand. The BFI team have worked hard to complete all testing requirements for AS 5062:2016 certification. Now that the Dafo System has achieved this certification, we are ready to roll the system out to our customers across Australia and New Zealand.

StrykerGreen is certified by Activfire and maintains an Activfire listing. It is designed and manufactured by BFI Fire who maintain Global Marks Quality Management ISO9001 stamp of approval. When used with StrykerGreen foam, it is 100% biodegradable, fluorine, PFOS and PFOA free.

Our BFI Fire suppression system range is designed to automatically protect lives and prevent the loss of irreplaceable high value assets with minimal business interruption across the following segments;

- Buses
- Forestry Machines
- Small and Large Plant Equipment
- Port Container Handlers
- Mining equipment
- Agriculture and other special applications



# DAFO AUSTRALIA

## FIRE SUPPRESSION SYSTEMS

### DAFO AUSTRALIA FIRE SUPPRESSION SYSTEM

- Flexible
- Cost-effective
- Custom designed to your specifications
- Certified to AS 5062:2016

BFI Fire is proud to introduce Dafo-Australia and Dafo Fire Suppression Systems to its customers. Dafo-Australia can now offer a complete range of AS 5062:2016 Dafo vehicle protection systems to the Australian and New Zealand markets.

Adaptable and fully customisable, the Dafo Fire suppression system can be installed on the manufacturers assembly line or as an after market fire suppression solution. It's suitable for use on;

- Buses
- Forestry
- Waste Management Equipment
- Small and Large Plant Equipment
- Small Plant Motors
- Port Container Handlers
- Mining Equipment
- Construction Equipment
- Other Special Applications

Talk to us today about protecting and keeping your most valuable assets safe.



# STRYKERGREEN

## FIRE SUPPRESSION SYSTEMS

### STRYKERGREEN SUPPRESSION FIRE SUPPRESSION SYSTEM

- Flexible
- Cost-effective
- Custom designed to your specifications
- Certified to AS 5062 :2016
- Maintains an ActivFire listing

Proudly designed, engineered and manufactured by BFI Fire - StrykerGreen LOP foam fire suppression systems are tested by Activfire and certified to AS 5062:2016

BFI maintain large stock holdings of StrykerGreen pre-engineered loss of pressure (LOP) foam fire suppression system components across key Australasian distribution points, meaning, we can quickly and efficiently supply and fulfill our customers needs.

Headed up by our Australian team, BFI Fire support a nationwide network of distributors who are fully trained in the design, installation and servicing of StrykerGreen pre-engineered LOP foam fire suppression systems.



StrykerGreen LOP foam fire systems are designed to protect heavy mobile vehicles and mobile plant equipment across the following industry sectors:

- Buses
- Forestry
- Waste Management Equipment
- Large and Small Plant Equipment
- Port Container Handlers
- Mining Equipment
- Construction Machinery
- Other special applications



# GASEOUS SUPPRESSION SYSTEMS

Streamex is a practical, cost-efficient, flexible and environmentally friendly system. It extinguishes fires quickly without damaging sensitive electronics as it does not leave a residue, making it the ideal solution for business continuity.



[www.bfire.com.au](http://www.bfire.com.au)



# STREAMEX - FK-5-1-12

## GASEOUS SUPPRESSION SYSTEM

### STREAMEX - FK-5-1-12

#### GASEOUS SUPPRESSION SYSTEM

- **FK-5-1-12 - zero ozone depletion potential**
- **Cost-efficient**
- **Flexible**
- **UL listed**
- **Wide range of cylinder options**
- **Leaves no residue - minimising the potential damage to sensitive electronics**

This cost-efficient, flexible and environmentally responsible system is the ideal solution to protect your business assets from fire.

Every system is uniquely engineered to your needs and, most importantly, upon discharge the Streamex system will extinguish a fire quickly and without damaging your sensitive electronics.



# MISCELLANEOUS

This section contains a range of fire blankets, alarms and other miscellaneous fire prevention equipment.



[www.bfire.com.au](http://www.bfire.com.au)

# FIRE BLANKETS

## VARIOUS SIZES

### FIRE BLANKETS

#### VARIOUS SIZES



Code	Description
FBT1010	Fire blanket 1m x 1m
FBT1212	Fire blanket 1.2m x 1.2m
FBT1812	Fire blanket 1.8m x 1.2m
FBT1818	Fire blanket 1.8m x 1.8m

### WATER-JEL

### FIRE BLANKETS

#### VARIOUS TYPES

Code	Description
FA0001	Water-Jel heat shield in cannister - 244cm x 183cm
FA0002	Water-Jel fire blanket - plus in cannister - 183cm x 152cm
FA0003	Water-Jel burn wrap in cannister - 91cm x 76cm
FA0004	Water-Jel burn wrap 91cm x 76cm - sachet
FA0005	Water-Jel fire blanket 183cm x 152cm - sachet
FAPOUCH	Water-Jel FA0005 fire blanket & orange emergency pouch



# MISCELLANEOUS

## BURN FIRST AID

### WATER-JEL BURN DRESSINGS PACKS

Code	Description
FA0101	Water-Jel sterile burn dressing - 5cm x 15cm (15 pack)
FA0102	Water-Jel sterile burn dressing - 10cm x 10cm (15 pack)
FA0103	Water-Jel sterile burn dressing - 10cm x 40cm (7 pack)
FA0104	Water-Jel sterile burn dressing 20cm x 45cm (5 pack)
FA0105	Water-Jel sterile face mask - 30cm x 40cm (5 pack)
FA0106	Water-Jel sterile hand dressing - 20cm x 55cm (5 pack)
FA0145	Burn Jel 50ml squeeze bottle
FA0157P	Burn Jel unit dose sachets (6x4g pack of 5)

### WALL FIXING BRACKETS

Code	Description
FA7007	Wall fixing bracket - suitable for water-jel medium hard case kit.

MISCELLANEOUS | PAGE 92

### WATER-JEL BURN KITS STATION, POUCH & HARD CASE

Code	Description
FA0402	Water-Jel large burn kit - SP pouch
FA0403	Water-Jel large workshop kit - hard case
FA0411	Water-Jel ambulance burn kit - pouch
FA0412	Water-Jel fire service burn kit - pouch
FA0413	Water-Jel burn kit XS
FA0414	Water-Jel industry burn kit - pouch
FA0415	Water-Jel catering burn kit - pouch
FA0416	Water-Jel emergency burn station - wall
FA0418	Water-Jel field services kit - pouch
FA0421	Water-Jel catering kit - hard case
FA0422	Water-Jel field services kit - hard case
FA0423	Water-Jel ambulance kit - hard case
FA0424	Water-Jel industry burn kit - hard case
FA0495	Water-Jel complete burn station



# MISCELLANEOUS

## ALARMS, AIR HORNS & WELDING BLANKETS

### ALARM BELL



Code	Description
FAS194-LA-150	Alarm Bell 24VCD 6" Red



### WELDING BLANKET

Code	Description
FBT3030	Welding blanket 3.0m x 3.0m

### WATER DRIVEN ALARM GONG



Code	Description
SPRO03	Water Driven Alarm Gong LA Red

### MANUAL FIRE ALARM



Code	Description
MIS212	Manual Fire Alarm

### AIR HORN



Code	Description
PA045	Horn Air W-Cannister Complete



## Leading the Fight Against Fire

One point of contact. Everything you need.

[www.bffire.com.au](http://www.bffire.com.au)

### HEAD OFFICE

 108A Munibung Road, Boolaroo NSW 2284

 PO Box 108, Cardiff NSW 2285

 +61 2 4927 6632

 [info@bffire.com.au](mailto:info@bffire.com.au)

### OUR LOCATIONS

#### Newcastle

108A Munibung Road  
Boolaroo NSW 2284

+61 2 4927 6632

#### Brisbane

30/388 Newman Road  
Geebung QLD 4034

+61 7 3148 8790